

[®] **SUN-FLOW**.INC.

SUN-FLOW INC., INDUSTRIAL RUBBER & PLASTIC PRODUCTS



REVISED 06/12



Code: SF-10
P.V.C. BLUE WATER
DISCHARGE HOSE

NOMINAL SIZE	I.D.	APPROX. WALL	MAX. W.P. at 70° psi	DESIGN B.P. psi	APPROX. Wt. 300ft
3/4"	0.79"	0.048"	140 psi	425	23 lbs
1"	1.04"	0.052"	110 psi	340	31 lbs
1-1/4"	1.30"	0.056"	80 psi	255	42 lbs
1-1/2"	1.61"	0.059"	80 psi	240	56 lbs
2"	2.09"	0.059"	80 psi	240	73 lbs
2-1/2"	2.56"	0.059"	65 psi	200	90 lbs
3"	3.07"	0.063"	80 psi	240	108 lbs
4"	4.13"	0.067"	70 psi	210	158 lbs
5"	5.07"	0.071"	40 psi	130	190 lbs
6"	6.16"	0.075"	60 psi	200	259 lbs
8"	8.15"	0.087"	35 psi	100	390 lbs
10"	10.20"	0.111"	35 psi	100	564 lbs
12"	12.13"	0.118"	35 psi	100	729 lbs
14"	14.14"	0.118"	30 psi	85	810 lbs
16"	16.14"	0.118"	30 psi	85	924 lbs

- **STND. LENGTH:** 300 ft. per bale (Special order for longer lengths)
- **TEMP. RANGE:** -5° F to 170° F. When Temperature is -15°C and Colder, please DO NOT Handle or Transport Hoses.
- **APPLICATIONS:** Mines, Construction, Irrigation, etc.
- **CONSTRUCTION:** 3-Ply Polyester Yarns. Both tube and cover are extruded simultaneously to obtain maximum bonding.
- **CAUTION:** For liability purposes, if temperature exceeds 110° F the working pressure will go down. Please check with factory to ensure sufficient safety factor.

Code: SF-10S
P.V.C. BLUE WATER
DISCHARGE HOSE

(Higher W.P. and Heavier Gauge)

NOMINAL SIZE	I.D.	APPROX. WALL	MAX. W.P. at 70° psi	DESIGN B.P. psi	APPROX. Wt. 300ft
10"	10.20"	0.126"	80 psi	230	650 lbs
12"	12.20"	0.134"	60 psi	230	830 lbs

Code: SF-50
P.V.C. 150 PSI RANGE (OPEN END)
BRICK RED DISCHARGE HOSE



NOMINAL SIZE	I.D.	APPROX. WALL	MAX. W.P. at 70° psi	DESIGN B.P. psi	U.S.A.	JAPAN
					APPROX. Wt. 300ft	APPROX. Wt. 300ft
1-1/2"	1.61"	0.079"	150	450	80 lbs	64 lbs
2"	2.09"	0.087"	150	450	103 lbs	85 lbs
2-1/2"	2.56"	0.091"	150	450		119 lbs
3"	3.07"	0.095"	150	450	164 lbs	158 lbs
4"	4.13"	0.102"	150	450	254 lbs	225 lbs
6"	6.18"	0.119"	150	450	400 lbs	375 lbs
8"	8.19"	0.134"	115	350		566 lbs

- **STND. LENGTH:** 300 ft. per bale (Special order for longer lengths)
- **TEMP. RANGE:** -5° F to 170° F. When Temperature is -15°C and Colder, please DO NOT Handle or Transport Hoses.
- **APPLICATIONS:** Mines, Construction, etc.
- **CONSTRUCTION:** 3-Ply Polyester Yarns. Both tube and cover are extruded simultaneously to obtain maximum bonding.
- **FLAME RESISTANT:** **USMSHA IC-150/1 (Size 1-1/2", 2", 2-1/2")**
Special order only
- **CAUTION:** For liability purposes, if temperature exceeds 110° F the working pressure will go down. Please check with factory to ensure sufficient safety factor.

® SUN-FLOW SF-20



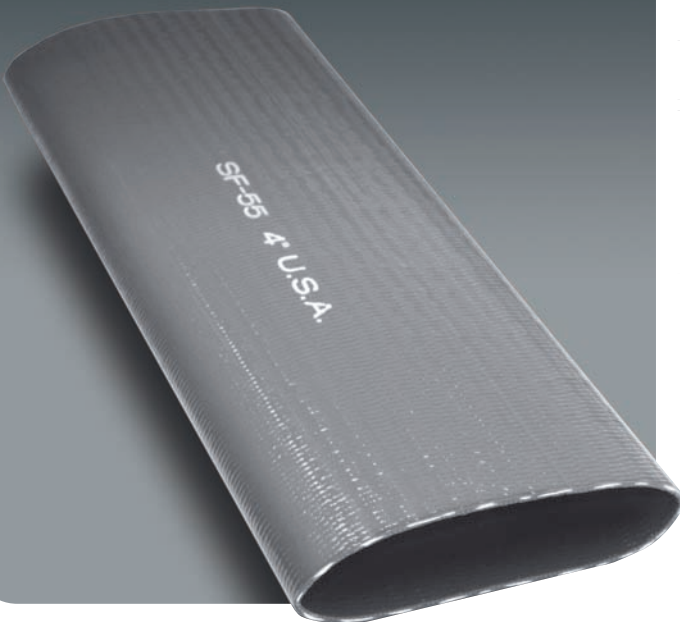
RECOMMEND COUPLING BY INTERNALLY EXPANDED METHOD OR CRIMPING.

Code: SF-20 P.V.C. MINE OR IRRIGATION HOSE, GREEN

NOMINAL SIZE	I.D.	APPROX. WALL	MAX. W.P. at 70° psi	DESIGN B.P. psi	T.S. LBS. Approx. at cut	APPROX. Wt. 300ft
1-1/2"	1.61"	0.090"	200 psi	630	2,300	78 lbs
2"	2.08"	0.100"	200 psi	630	4,700	108 lbs
2-1/2"	2.56"	0.100"	175 psi	530	5,300	120 lbs
3"	3.07"	0.118"	200 psi	600	11,000	201 lbs
4"	4.13"	0.157"	200 psi	600	16,000	340 lbs
6"	6.18"	0.197"	150 psi	600	25,000	656 lbs
8"	8.19"	0.236"	150 psi	600	52,200	1023 lbs

- TOUGH HEAVY DUTY APPLICATIONS: Mines, Irrigation, Construction, etc., for use with high tension and high working pressure.
- TEMP. RANGE: -5° F to 170° F. When Temperature is -15°C and Colder, please DO NOT Handle or Transport Hoses.
- STND. LENGTH: 300 ft. per bale (Special order for longer lengths)
- CONSTRUCTION: 3-Ply Yarns. Both tube and cover are extruded simultaneously to obtain maximum bonding.
- CAUTION: For liability purposes, if temperature exceeds 110°F the working pressure will go down. Please check with factory to ensure sufficient safety factor.

® SUN-FLOW SF-55



Code: SF-55 GRAY RECOMMENDED FOR SPRINKLER, PIVOT AND WATER TRANSPORT - THIS HOSE HAS LESS DIAMETER GROWTH AND ELONGATION THEREFORE ALLOWING FOR MUCH GREATER EASE OF RE-COUPLING AFTER USE.

NOMINAL SIZE	I.D.	APPROX. WALL	MAX. W.P. at 70° psi	APPROX. Wt. 300ft
1-1/2"	1.61"	0.063"	150 psi	60 lbs
2"	2.08"	0.087"	150 psi	108 lbs
3"	3.07"	0.100"	150 psi	194 lbs
4"	4.13"	0.114"	100 psi	280 lbs
(128 mm) 5"	5.07"	0.130"	100 psi	400 lbs
6"	6.10"	0.146"	100 psi	500 lbs

- TOUGH HEAVY DUTY APPLICATIONS: Sprinkler, Pivot & Traveler, Water Transportation. (Pivot & Traveler use 3", 4", 5", 6" only)
- TEMP. RANGE: -5° F to 170° F. When Temperature is -15°C and Colder, please DO NOT Handle or Transport Hoses.
- CONSTRUCTION: 3-Ply Polyester Yarns. Both tube and cover are extruded simultaneously to obtain maximum bonding.
- CAUTION: For liability purposes, if temperature exceeds 110°F the working pressure will go down. Please check with factory to ensure sufficient safety factor.



Code: SF-60
P.V.C. SPRING WIRE SUCTION HOSE

- APPLICATIONS: Food and Beverage Dispensing
Coolant, Non-Toxic formulation conforming to FDA requirements.
- CONSTRUCTION: One Spring Wire, Clear PVC Wall.
- TEMP. RANGE: 20° F to 150° F. When Temperature is -15°C and Colder, please DO NOT Handle or Transport Hoses.
- CAUTION: For liability purposes, if temperature exceeds 110°F the working pressure will go down. Please check with factory to ensure sufficient safety factor.

I.D.	O.D.	MAX. W.P. at 70° psi	LENGTH	APPROX. Wt.
1/4"	1/2"	210 psi	100 ft	9 lbs
3/8"	5/8"	180 psi	100 ft	12 lbs
1/2"	13/16"	150 psi	100 ft	21 lbs
5/8"	1"	100 psi	100 ft	32 lbs
3/4"	1-1/8"	100 psi	100 ft	36 lbs
1"	1-3/8"	84 psi	100 ft	47 lbs
1-1/4"	1-3/4"	84 psi	50 ft	39 lbs
1-1/2"	2"	84 psi	50 ft	43 lbs
2"	2-1/2"	70 psi	50 ft	56 lbs

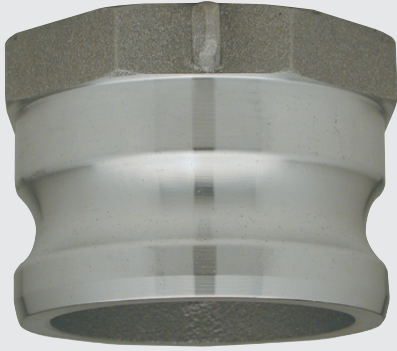


Code: SF-70
Circular Woven Nitrile Rubber Black

NOMINAL SIZE	THICKNESS	WEIGHT lbs/ft	WORKING PRESSURE	END PULL
1-1/2"	0.08"	0.21 lbs	150 psi	1,980 lbs
2"	0.08"	0.30 lbs	150 psi	2,860 lbs
3"	0.10"	0.46 lbs	150 psi	3,960 lbs
4"	0.10"	0.64 lbs	150 psi	5,280 lbs
6"	0.12"	1.11 lbs	150 psi	11,000 lbs
8"	0.12"	1.51 lbs	150 psi	14,520 lbs

- COVER: NBR Ribbed. Resistant to oil, abrasion and weathering.
- TEMP. RANGE: -20°F to 200°F.
- APPLICATIONS: Industrial wash down, Pump discharge, submersible pump discharge, Bypass systems, Irrigation/Watering, Fertilizer distribution, Cable cover, Pollution control flotation, Limited oil & Chemical use, Dewatering jetting.
- STND. LENGTH: 200 ft.

ALUMINUM CAMLOCK (A)



SIZE	PKG QTY	PART#
1-1/2"	100	CGA-150-A
2"	100	CGA-200-A
2-1/2"	48	CGA-250-A
3"	64	CGA-300-A
4"	45	CGA-400-A
6"	24	CGA-600-A
8"	6	CGA-800-A

ALUMINUM CAMLOCK (B)



SIZE	PKG QTY	PART#
1-1/2"	50	CGB-150-A
2"	60	CGB-200-A
2-1/2"	48	CGB-250-A
3"	27	CGB-300-A
4"	24	CGB-400-A
6"	8	CGB-600-A

ALUMINUM CAMLOCK (C)



SIZE	PKG QTY	PART#
1-1/2"	50	CGC-150-A
2"	50	CGC-200-A
2-1/2"	24	CGC-250-A
3"	32	CGC-300-A
4"	18	CGC-400-A
6"	8	CGC-600-A
8"	4	CGC-800-A

ALUMINUM CAMLOCK (D)



SIZE	PKG QTY	PART#
1-1/2"	60	CGD-150-A
2"	60	CGD-200-A
2-1/2"	48	CGD-250-A
3"	27	CGD-300-A
4"	24	CGD-400-A
6"	8	CGD-600-A

Package quantity is only a guideline & not required quantity for ordering.

ALUMINUM CAMLOCK (E)



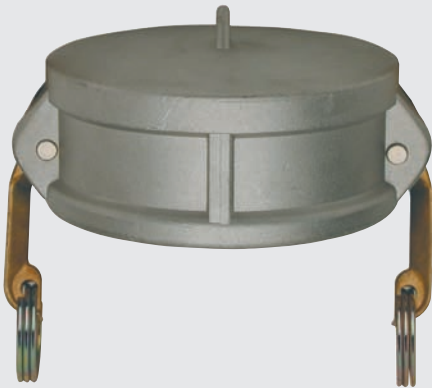
SIZE	PKG QTY	PART#
1-1/2"	100	CGE-150-A
2"	50	CGE-200-A
2-1/2"	50	CGE-250-A
3"	32	CGE-300-A
4"	18	CGE-400-A
6"	8	CGE-600-A
8"	4	CGE-800-A

ALUMINUM CAMLOCK (F)



SIZE	PKG QTY	PART#
1-1/2"	75	CGF-150-A
2"	80	CGF-200-A
2-1/2"	50	CGF-250-A
3"	48	CGF-300-A
4"	24	CGF-400-A
6"	16	CGF-600-A

ALUMINUM CAMLOCK (DC)



SIZE	PKG QTY	PART#
1-1/2"	50	CDC-150-A
2"	60	CDC-200-A
2-1/2"	40	CDC-250-A
3"	30	CDC-300-A
4"	24	CDC-400-A
6"	10	CDC-600-A

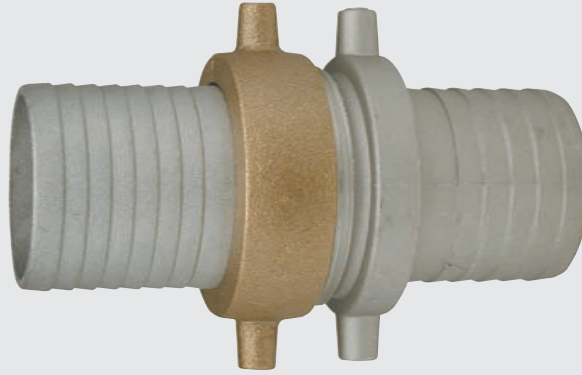
ALUMINUM CAMLOCK (DP)



SIZE	PKG QTY	PART#
1-1/2"	120	CDP-150-A
2"	100	CDP-200-A
2-1/2"	100	CDP-250-A
3"	64	CDP-300-A
4"	45	CDP-400-A
6"	22	CDP-600-A

Package quantity is only a guideline & not required quantity for ordering.

ALUMINUM PIN-LUG WITH BRASS SWIVEL



ALUMINUM	SETS		FEMALE		MALE	
SIZE	PART#	PKG QTY	PART#	PKG QTY	PART#	PKG QTY
1-1/2" NPS	PL-150-AB	60	PF-150-AB	120	PM-150-A	160
1-1/2" NST	PLT-150-AB	60	PFT-150-AB	120	PMT-150-A	160
2" NPS	PL-200-AB	40	PF-200-AB	100	PM-200-A	80
2-1/2" NPS	PL-250-AB	30	PF-250-AB	60	PM-250-A	60
2-1/2" NST	PLT-250-AB	30	PFT-250-AB	60	PMT-250-A	60
3" NPS	PL-300-AB	18	PF-300-AB	40	PM-300-A	30
4" NPS	PL-400-AB	8	PF-400-AB	16	PM-400-A	16
6" NPS	PL-600-AB	6	PF-600-AB	12	PM-600-A	12

HOSE NOZZLE (BRASS)



SIZE	PKG QTY	PART#
3/4" GHT	100	HNT-75-B
3/4" NPS	100	HN-75-B
1" NPS	50	HN-100-B
1-1/4" NPS	30	HN-125-B
1-1/2" NPS	30	HN-150-B
1-1/2" NST	30	HNT-150-B
2" NPS	15	HN-200-B
2-1/2" NPS	10	HN-250-B
2-1/2" NST	10	HNT-250-B

HYDRANT ADAPTER (BRASS)



FOR OTHER SIZES & STYLES PLEASE CHECK WITH
YOUR REPRESENTATIVE
OR CALL SUN-FLOW DIRECT.

SIZE	PKG QTY	PART#
2-1/2" F NST x 3/4" M GHT	36	FCR-2508G-B
2-1/2" F NST x 3/4" M NPT	36	FCR-2508T-B
2-1/2" F NST x 3/4" M NPS	36	FCR-2508S-B
2-1/2" F NST x 1" M NPS	60	FCR-2510S-B
2-1/2" F NST x 1" M NPT	60	FCR-2510T-B
2-1/2" F NST x 1-1/2" M NPS	60	FCR-2515S-B
2-1/2" F NST x 1-1/2" M NPT	60	FCR-2515T-B
2-1/2" F NST x 1-1/2" M NST	60	FCR-2515N-B
2-1/2" F NST x 2" M NPS	60	FCR-2520S-B
2-1/2" F NST x 2" M NPT	60	FCR-2520T-B
2-1/2" F NST x 3" M NPS	60	FCR-2530S-B
2-1/2" F NST x 3" M NPT	60	FCR-2530T-B

Package quantity is only a guideline & not required quantity for ordering.

COMBINATION NIPPLE STEEL PLATED



SIZE	PKG QTY	PART#
1/2"	300	CNT-50-SP
3/4"	200	CNT-75-SP
1"	200	CNT-100-SP
1-1/4"	100	CNT-125-SP
1-1/2"	108	CNT-150-SP
2"	50	CNT-200-SP
2-1/2"	20	CNT-250-SP
3"	32	CNT-300-SP
4"	18	CNT-400-SP
5"	6	CNT-500-SP
6"	4	CNT-600-SP
8"	4	CNT-800-SP
10"	1	CNT-1000-SP
12"	1	CNT-1200-SP

HOSE MENDER STEEL PLATED



SIZE	PKG QTY	PART#
1/2"	400	HM-50-SP
3/4"	350	HM-75-SP
1"	200	HM-100-SP
1-1/4"	98	HM-125-SP
1-1/2"	80	HM-150-SP
2"	60	HM-200-SP
2-1/2"	20	HM-250-SP
3"	20	HM-300-SP
4"	12	HM-400-SP
5"	6	HM-500-SP
6"	4	HM-600-SP
8"	2	HM-800-SP
10"	1	HM-1000-SP
12"	1	HM-1200-SP

ROUND HOLE STRAINER



SIZE	PKG QTY	PART#
1-1/2"	32	SR-150-SP
2"	18	SR-200-SP
2-1/2"	18	SR-250-SP
3"	18	SR-300-SP
4"	18	SR-400-SP
6"	6	SR-600-SP
8"	4	SR-800-SP

SQUARE HOLE STRAINER



SIZE	PKG QTY	PART#
1-1/2"	32	SS-150-SP
2"	18	SS-200-SP
2-1/2"	18	SS-250-SP
3"	18	SS-300-SP
4"	18	SS-400-SP
6"	6	SS-600-SP

Package quantity is only a guideline & not required quantity for ordering.

FOOT VALVE



SIZE	PKG QTY	PART#
1-1/2"	20	FV-150-DP
2"	9	FV-200-DP
2-1/2"	4	FV-250-DP
3"	8	FV-300-DP
4"	4	FV-400-DP
6"	1	FV-600-DP
8"	1	FV-800-DP

UNIVERSAL HOSE END



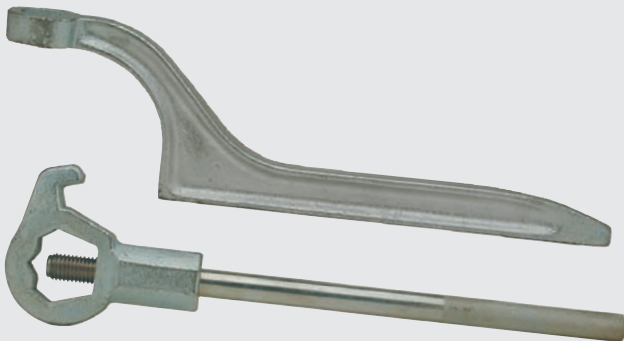
SIZE	PKG QTY	PART#
3/8"	100	HE-38-DP
1/2"	100	HE-50-DP
3/4"	100	HE-75-DP
1"	80	HE-100-DP

UNIVERSAL FEMALE END



SIZE	PKG QTY	PART#
3/8"	100	FE-38-DP
1/2"	100	FE-50-DP
3/4"	100	FE-75-DP
1"	100	FE-100-DP

SPANNER WRENCH



SIZE	PKG QTY	PART#
1-1/2"	100	SW-150-DP
2"	100	SW-200-DP
2-1/2"	60	SW-250-DP
3"	45	SW-300-DP
4"	30	SW-400-DP
	14	ASW-00-DS

UNIVERSAL MALE END



SIZE	PKG QTY	PART#
3/8"	100	ME-38-DP
1/2"	100	ME-50-DP
3/4"	100	ME-75-DP
1"	100	ME-100-DP

Package quantity is only a guideline & not required quantity for ordering.

THREE WAY CONNECTOR



SIZE	PKG QTY	PART#
-	100	UW-300-DP

A-9 TWO BOLT CLAMP



FITS: 1-1/8" TO 1-5/16"

SIZE	PKG QTY	PART#
3/4"	100	BCQ-75B-DP

DOUBLE BOLT CLAMP



SIZE	PKG QTY	PART#	DIAMETER (INCH)	
			FROM	TO
#400	30	DBC-400-DP	3-1/2"	4"
#463	30	DBC-463-DP	4-1/16"	4-7/16"
#525	20	DBC-525-DP	4-3/16"	5"
#550	20	DBC-550-DP	5"	5-1/2"
#600	20	DBC-600-DP	5-1/2"	6-1/16"
#675	20	DBC-675-DP	6-1/8"	6-7/8"
#769	10	DBC-769-DP	6-15/16"	7-5/8"
#818	10	DBC-818-DP	7-11/16"	8-3/16"
#875	10	DBC-875-DP	8-1/4"	8-7/8"
#988	10	DBC-988-DP	8-15/16"	9-7/8"
#1125	5	DBC-1125-DP	9-15/16"	11-3/8"
#1275	5	DBC-1275-DP	11-3/16"	13"
#1450	3	DBC-1450-DP	13-3/16"	15"
#1700	3	DBC-1700-DP	15-1/16"	17-1/2"

Package quantity is only a guideline & not required quantity for ordering.

REBOLT (DOUBLE BOLT)



When considering your clamp needs, take note of application, type, style & specific inch range before placing order.

Also note our new inch ranges to better fit your specific hose needs.

REBOLT (SINGLE BOLT)



SIZE	PKG QTY	PART#	INCH RANGE	MM RANGE	APPLICATION	TYPE
1-1/2"	200	REB-150-SS	1.73" - 1.85"	044 - 047	SUCTION	SINGLE
2"	200	REB-200-SS	2.36" - 2.48"	060 - 063	SUCTION	SINGLE
2-1/2"	100	REB-250-SS	2.91" - 3.11"	074 - 079	SUCTION	SINGLE
3"	100	REB-300-SS	3.38" - 3.58"	086 - 091	SUCTION	SINGLE
4"	100	REB-400-SS	4.45" - 4.76"	113 - 121	SUCTION	SINGLE
6"	80	REB-600-SS	6.37" - 6.85"	162 - 174	SUCTION	SINGLE

SIZE	PKG QTY	PART#	INCH RANGE	MM RANGE	APPLICATION	TYPE
1-1/2"	500	RC-150-SD	1.654" - 1.772"	040 - 043	DISCHARGE	SINGLE
2"	200	RC-200-SD	2.047" - 2.200"	052 - 056	DISCHARGE	SINGLE
2-1/2"	100	RC-250-SD	2.677" - 2.874"	068 - 073	DISCHARGE	SINGLE
3"	100	RC-300-SD	3.150" - 3.346"	080 - 085	DISCHARGE	SINGLE
4"	100	RC-400-SD	4.095" - 4.409"	104 - 112	DISCHARGE	SINGLE
6"	80	RC-600-SD	6.082" - 6.571"	149 - 161	DISCHARGE	SINGLE
8"	60	RC-800-SD	7.913" - 8.400"	201 - 213	DISCHARGE	SINGLE
10"	30	RC-1000-SD	10.078" - 10.551"	256 - 268	DISCHARGE	SINGLE
12"	30	RC-1200-SD	12.126" - 12.598"	308 - 320	DISCHARGE	SINGLE
14"	30	RC-1400-SD	14.095" - 14.567"	358 - 370	DISCHARGE	SINGLE
16"	30	RC-1600-SD	16.063" - 16.535"	408 - 420	DISCHARGE	SINGLE

SIZE	PKG QTY	PART#	INCH RANGE	MM RANGE	APPLICATION	TYPE
3"	100	RC-300-DB	3.071" - 3.465"	078 - 088	DISCH & SUCT	DOUBLE
4"	100	RC-400-DB	4.095" - 5.000"	104 - 128	DISCH & SUCT	DOUBLE
6"	60	RC-600-DB	5.591" - 7.300"	142 - 186	DISCH & SUCT	DOUBLE
8"	60	RC-800-DB	7.913" - 8.400"	201 - 213	DISCH & SUCT	DOUBLE

SIZE	PKG QTY	PART#	INCH RANGE	MM RANGE	APPLICATION	TYPE
1-1/2"	500	RB-150-SD	1.46" - 1.69"	037 - 043	DISCHARGE	SINGLE
2"	200	RB-200-SD	1.93" - 2.17"	049 - 055	DISCHARGE	SINGLE
2-1/2"	100	RB-250-SD	2.48" - 2.72"	063 - 069	DISCHARGE	SINGLE
3"	100	RB-300-SD	2.95" - 3.19"	075 - 081	DISCHARGE	SINGLE
4"	100	RB-400-SD	3.94" - 4.17"	100 - 106	DISCHARGE	SINGLE
6"	80	RB-600-SD	5.94" - 6.18"	150 - 157	DISCHARGE	SINGLE
8"	60	RB-800-SD	7.95" - 8.19"	200 - 208	DISCHARGE	SINGLE
10"	30	RB-1000-SD	9.96" - 10.20"	253 - 259	DISCHARGE	SINGLE
12"	30	RB-1200-SD	11.93" - 12.17"	303 - 309	DISCHARGE	SINGLE
14"	30	RB-1400-SD	13.94" - 14.17"	354 - 360	DISCHARGE	SINGLE
16"	30	RB-1600-SD	15.94" - 16.18"	405 - 411	DISCHARGE	SINGLE

Package quantity is only a guideline & not required quantity for ordering.

PIN-LUG GASKET			CAMLOCK GASKET			HANDLE, RING & PIN		
SIZE	PKG QTY	PART#	SIZE	PKG QTY	PART#	SIZE	PKG QTY	TYPE
1-1/2" NPS	1000	PG-150-NBR	1-1/2"	550	CG-150-NBR	3/4"	1000	BRASS
1-1/2" NST	1000	PGT-150-NBR	2"	500	CG-200-NBR	1" - 1-1/2"	1000	BRASS
2" NPS	1000	PG-200-NBR	2-1/2"	300	CG-250-NBR	2" - 2-1/2"	400	BRASS
2-1/2" NPS	500	PG-250-NBR	3"	300	CG-300-NBR	3" - 5"	200	BRASS
2-1/2" NST	500	PGT-250-NBR	4"	200	CG-400-NBR	6"	100	BRASS
3" NPS	500	PG-300-NBR	6"	20	CG-600-NBR	8"	50	BRASS
4" NPS	500	PG-400-NBR	8"	20	CG-800-NBR			
6" NPS	200	PG-600-NBR						
UNIV GASKET	2500	UG-2-R						
						SIZE	PKG QTY	TYPE
						3/4"	1000	S.S.
						1" - 1-1/2"	1000	S.S.
						2" - 2-1/2"	400	S.S.
						3" - 5"	200	S.S.
						6"	100	S.S.

Package quantity is only a guideline & not required quantity for ordering.

TERMS OF SALE

TERMS: Net 30 days, unless otherwise specified by our Credit Department.

FREIGHT: All warehouse shipments F.O.B. point of shipment.

RETURNED GOODS: Returned goods must have prior approval of Sun-Flow, Inc. Shipments without our authorization will be refused.

CLAIMS: No claims will be allowed unless reported within 5 days after receipt of merchandise.

WARRANTY: The products sold or distributed by Sun-Flow, Inc. are warranted to our customers to be free from defects in material and workmanship at the time of shipment by us. All warranty claims shall be made with-in six (6) months after we have shipped the merchandise. Our liability hereunder is limited to the purchase price of any merchandise proving defective, or at our option, to the replacement of such merchandise upon its authorized return to us.

THIS WARRANTY IS IN LIEU OF AND EXCLUDES ALL OTHER WARRANTIES, EXPRESSED, IMPLIED, STATUTORY, OR OTHERWISE CREATED UNDER APPLICABLE LAW INCLUDING, BUT NOT LIMITED TO, THE WARRANTY OF MERCHANTABILITY AND THE WARRANTY OF FITNESS FOR A PARTICULAR PURPOSE. IN NO EVENT SHALL WE BE LIABLE FOR SPECIAL, INCIDENTAL, OR CONSEQUENTIAL DAMAGES, INCLUDING LOSS OF PROFITS.

PRECAUTIONS: All products sold by Sun-Flow, Inc. are in the nature of commodities and they are sold by our published specifications and not for particular purposes, uses or applications. The purchasers or users of the merchandise or products shall first determine their suitability for the intended purposes, uses or applications and they shall either conduct their own engineering studies or test, or retain qualified engineers, consultants or testing laboratories and consult with them before determining the proper use, suitability or propriety of the products for the intended purposes, uses or applications. Sun-Flow, Inc. does not recommend the merchandise or products for any particular purpose, use or application, and the purchaser or user thereof shall assume full responsibility for the suitability propriety, use and application of products. The products, including but not limited to, hose tubing or coupling may fail due to the use or conveyance of substances at elevated or lowered temperatures or at excessive pressures. The conveyance of abrasive, injurious, flammable, explosive or damaging substances. Hose clamps or couplings may loosen after initial installation and all sections of hose, including connections, couplings and clamps, should be inspected regularly, and should be replaced, adjusted or retightened for the avoidance of leakage, for the prevention of possible damage and injuries. Except in its warranty Sun-Flow, Inc. shall not be liable or responsible for direct or indirect injuries or damages caused by or attributed to the failure or malfunction of any products sold or distributed by it.

* We reserve the right to change specifications without prior notification.

PVC HOSE CHEMICAL RESISTANCE CHART

A = SATISFACTORY B = BE EXPECTED TO CHANGE C = UNSATISFACTORY

NOTE: THIS PARTIAL LISTING IS FOR GENERAL GUIDANCE ONLY AND NO WARRANTY CAN BE EXTENDED AS EXACT OPERATING CONDITIONS MAY VARY IN EACH CASE. WE BASE THE INFORMATION ON PAST KNOWLEDGE AND EXPERIENCE.

(REFERENCE ONLY CHECK WITH FACTORY)

Chemical	Concentration by Weight	Operating Conditions		Chemical	Concentration by Weight	Operating Conditions		Chemical	Concentration by Weight	Operating Conditions	
		68°F	140°F			68°F	140°F			68°F	140°F
Acetate Solvents		C	C	Creosote		C	C	Magnesium Hydroxide		A	A
Acetic Acid	10%	A	B	Cresol		A	B	Magnesium Sulphate		A	A
Acetic Acid	Glacial	B	C	Cresylic Acid		C	C	Malic Acid		A	A
Acetone		C	C	Cyclohexane		A	B	Methyl Acetate		C	C
Acrylonitrile		A	B	DDT Weed Killer		C	C	Methyl Bromide		C	C
Adipic Acid		A	B	Detergent Synthetic		A	B	Methyl Ethyl Ketone		C	C
Alcohol Methyl		A	B	Developers Photographic		A	A	Methylene Chloride		C	C
Alcohol Ethyl		A	B	Dextrin		A	A	Mineral Oils		A	B
Alcohol Isopropyl		A	B	Dextrose		A	A	Monochlorobenzene		C	C
Aluminum Acetate		A	A	Dibutyl Phthalate		C	C	Naphtha		B	C
Aluminum Chloride		A	A	Dichlorobenzene		C	C	Naphthalene		C	C
Aluminum Hydroxide		A	A	Diesel oil		B	C	Nitric Acid	10%	A	A
Aluminum Sulfate		A	A	Diethylene Glycol		A	A	Nitric Acid	40%	A	B
Allyl Chloride		C	C	Diethyl Ether		C	C	Nitric Acid	70%	C	C
Ammonia	0.88S.G. Aqueous	A	A	Diocetyl Phthalate		C	C	Nitrobenzene		C	C
Ammonia	Dry Gas	A	A	Emulsifiers		A	A	Nitrogen Fertilizers		A	A
Ammonia	Liquid	C	C	Emulsions Photographic		A	A	Oleic Acid		A	B
Ammonium Chloride		A	A	Ethyl Acetate		C	C	Oxalic Acid		A	A
Animal Oils		A	A	Ethylene Dichloride		C	C	Palmitic Acid		A	A
Amyl Acetate		C	C	Ethylene Glycol		A	A	Paraffin		A	A
Aniline Oils		B	C	Fatty Acid		A	A	Pentane		A	A
Aromatic Hydrocarbons		C	C	Ferric Chloride		A	A	Perchloroethylene		C	C
Asphalt		C	C	Ferric Sulphate		A	A	Phenol		B	C
ASTM Fuel A		B	B	Ferrous Chloride		A	A	Phosphoric Acid		A	A
ASTM Fuel B		C	C	Ferrous Sulphate		A	A	Pitch		A	B
ASTM #1 Oil		A	A	Fixing Solution Photographic		A	A	Potassium Hydroxide		A	A
ASTM #3 Oil		B	C	Fluorine		C	C	Propane		A	A
Barium Chloride		A	A	Fomaldehyde	40%	C	C	Sea Water		A	A
Barium Hydroxide		A	A	Formic Acid	40%	A	A	Sodium Hydroxide	10%	A	A
Barium Sulfide		A	A	Formic Acid	50%	B	C	Sodium Hydroxide	50%	A	C
Benzene		C	C	Formic Acid	100%	C	C	Sodium Cyanide		A	A
Benzine		B	B	Fuel Oil		B	C	Soybean Oil		A	B
Bordaux Mixture		A	A	Glacial Acetic Acid		B	C	Stearic Acid		A	A
Borax		A	A	Glucose		A	A	Styrene		C	C
Boric Acid		A	A	Glycerine		A	A	Sulphur Dioxide	Dry	A	A
Brine		A	A	Grape Sugar		A	A	Sulphur Dioxide	Moist	B	C
Bromine Traces		C	C	Grease		A	B	Sulphur Dioxide	Liquid	C	C
Butyl Acetate		C	C	Heptane		B	C	Sulphuric Acid	45%	A	A
Calcium Hydroxide		A	A	Hexane		B	C	Sulphuric Acid	60%	B	B
Calcium Hypochlorite		A	A	Hydrobromic Acid		C	C	Sulphuric Acid	98%	C	C
Carbonic Acid		B	C	Hydrochloric Acid	10%	C	C	Sulphurous Acid	30%	B	A
Carbon Dioxide		A	A	Hydrochloric Acid	40%	C	C	Tannic Acid		A	A
Carbon Disulphite		C	C	Hydrofluoric Acid	10%	C	C	Tartaric Acid		A	A
Carbon Monoxide		A	A	Hydrofluoric Acid	40%	C	C	Tetrahydrofuran		C	C
Carbon Tetrachloride		C	C	Hydrofluoboric Acid		A	A	Toluene		C	C
Casein		A	B	Hydrofluosilicic Acid		A	A	Trichlorethylene		C	C
Chlorine	Dry Gas	A	A	Hydrogen Peroxide		A	A	Triethanolamine		A	A
Chlorine	Wet Gas	B	C	Hydrogen Sulphide		A	A	Tricresyl Phosphate		C	C
Chlorine	Water	C	C	Iso-Octan		A	B	Turpentine		B	C
Chlorobenzene		C	C	Isopropyl Acetate		C	C	Urea		A	A
Chloroform		C	C	Kerosene		B	B	Vinegar		A	A
Chromic Acid		A	B	Ketones		C	C	Vinyl Acetate		C	C
Citric Acid		A	A	Lactic Acid	10%	A	A	Vinyl Chloride		C	C
Coal Tar		C	C	Lactic Acid	100%	C	C	Water		A	A
Copper Chloride		A	A	Lacquer Solvents		B	C	Xylene		C	C
Copper Nitrate		A	A	Linseed Oil		A	A	Zinc Chloride		A	A
Copper Suphate		A	A	Lubricating Oils		A	A	Zinc Sulphate		A	A
Cottonseed Oil		B	C	Magnesium Chloride		A	A				



20408 EARL STREET
TORRANCE, CALIFORNIA 90503
TEL: (310) 370-1568 • FAX: (310) 371-7186
800-PVC-FLOW (782-3569)
Email: sunflowinc@sunflowinc.com
www.sun-flow.com

SALES OFFICES

ILLINOIS	(224) 569-3081
OHIO	(513) 451-6954
NEW JERSEY	(215) 321-0106
FLORIDA	(407) 645-3595
WASHINGTON	(360) 687-5557
NEW YORK	(716) 773-2109
TEXAS	(713) 926-4500

WAREHOUSE LOCATIONS:

CALIFORNIA
CHICAGO
HOUSTON
ATLANTA
TRENTON

DISTRIBUTED OR REPRESENTED BY: